

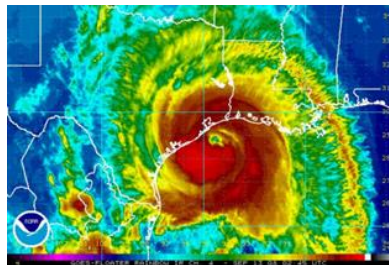
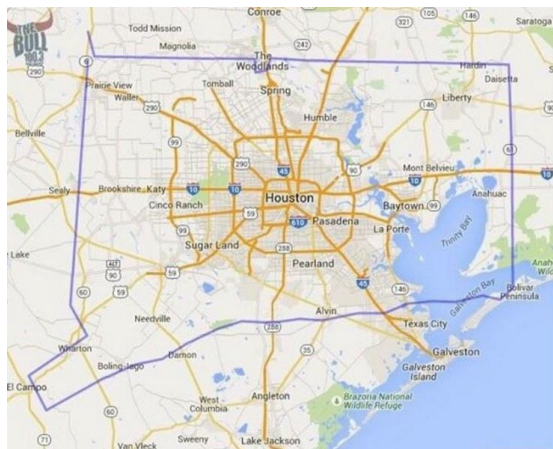


# Emergency Preparedness and Continuity of Operations: An All Hazards Approach

David Kester  
Mark Sloan

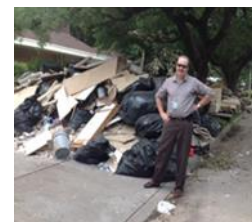
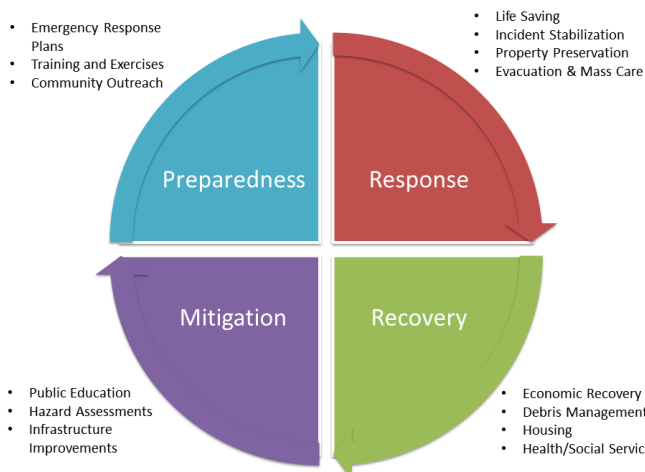
|                         |   |
|-------------------------|---|
| 1 - MAXIMUM Readiness   | i |
| 2 - HIGH Readiness      | i |
| 3 - INCREASED Readiness | i |
| 4 - NORMAL Readiness    | i |

Everything in Texas is...



## Threats

## Phases of Emergency Management



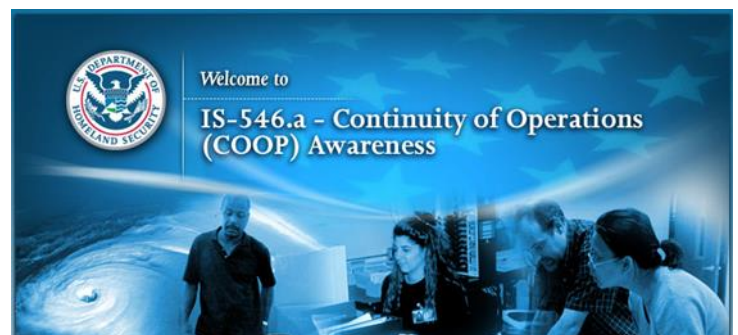
# Safety, Sustain and Restoration

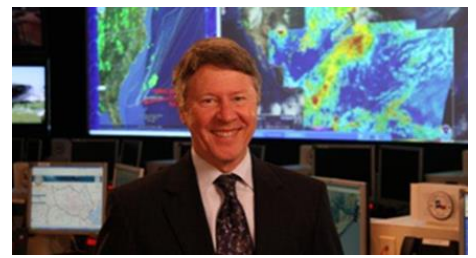


- **Emergency Action Plan:** facility/department procedures for emergency situations including personnel safety and evacuation procedures
- **Continuity of Operations Plan:** The effort to sustain and resume essential functions and basic services.
- **Continuity of Government:** The effort to sustain a viable form of government

## Basics of COOP

- Ensure the continuous performance of essential functions.
- Protect essential facilities, records, and other assets.
- Achieve a timely and orderly recovery and resumption.
- Identify alternate locations.
- Establish lines of succession and delegations of authority.
- Identify the Emergency Relocation Group (ERG)
- Identify internal and external means of communication.
- Test, train, and exercise
- Maintain and Review the COOP





## Issues and Reality

- Balancing Responsibility to Government Operations and the Safety of the Public
- County Judge is County’s Emergency Management Director
- Declaration of Local Disaster (Government Code §418.108)

## A Lifetime of Disaster



## “Memorial Day Flood” 2015



## Spring Showers Turn Into....”Tax Day Flood” 2016



## The Bayou City-Downtown Houston

## “Tax Day” Flooding was....off the charts!

| Location                       | Rainfall | Duration | Extrapolated Return Frequency |
|--------------------------------|----------|----------|-------------------------------|
| Pattison (Waller County)       | 23.50 in | 14.5-hr  | ~ 10,000 yr (0.01%)           |
| Pattison (Waller County)       | 21.93 in | 24-hr    | ~ 2,000 yr (0.05%)            |
| Monaville (Waller County)      | 19.30 in | 10-hr    | ~ 2,500 yr (0.04%)            |
| Mound Creek at Mathis          | 16.70 in | 12-hr    | ~ 1,000 yr (0.1%)             |
| Langham Creek at W Little York | 16.60 in | 12-hr    | ~ 900-yr (0.11%)              |
| Cypress Creek at Sharp Rd      | 16.10 in | 12-hr    | ~ 900-yr (0.11%)              |
| Langham Creek at Longenbaugh   | 15.70 in | 12-hr    | ~ 700-yr (0.14%)              |
| Cypress Creek at Katy Hockley  | 15.10 in | 12-hr    | ~ 600-yr (0.17%)              |



# Guidelines for County Government Operations Status Due to Severe Inclement Weather or Other Emergencies

- Safety First (Public/Employees)
- Department Head Responsibilities
- Department Specific COOP
- Required notification to Commissioners Court and JIC
- Designation of Personnel
- Red Team (“Essential Personnel”)
- White Team-Check with Supervisor Prior to Going
- Blue Team-Stay Home Until Notified



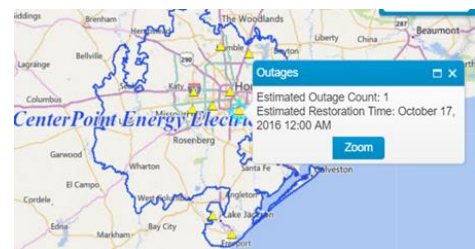
## Definitions

- Temporary Closure or Delayed Schedule
- Normal Operations
- Government Closure or Delay



## Site Specific Examples

- Limited area weather conditions
- Power Outage
- Hazardous material, odor or spill
- Water Line Break
- Loss of Climate Control



## Personnel Matters

- (Family and) Safety First
- Notification System
- Back up list
- Payment Policies
- Alternative Work Locations
- Alternative Work Assignments/Training



## Lessons Learned

- The Saffir Simpson Scale is just a number
- Plan
- Prepare
- Train
- Exercise
- Repeat



## Health and Safety For EOC and Responders

- Watch for Fatigue/Stress
- Food and Water
- De-brief and de-mobilize

